



HARDSCAPE
Inspire : Select : Supply

KELLEN

BRAVE LANDSCAPES • STREETS AHEAD

www.hardscape.co.uk

CONTENTS



04 INTRODUCTION

06 GREEN CREDENTIALS

08 SUPPLY

10 SIZES

12 BRECCIA

24 LAVARO

32 LISCIO

42 PERLANO

46 AESTHETIC

62 METALLO

68 PERMEABLE

72 KERBS

90 STEPS

INTRO

BRAVE LANDSCAPES STREETS AHEAD

INTRODUCTION

Over the past decade the ingenious and innovational modular concrete Kellen paving range from Hardscape has provided a creative and imaginative alternative to traditional hard landscaping products. Using a natural stone aggregate top layer available in several textures, finishes and a variety of envied colours, Kellen products offer a solution with real design choice and at a sensible budget adding noticeable value to projects in terms of fulfilling design aspirations and exceeding technical requirements.

An extensive size range including plank and large plan sizes are available enabling 'delivery of the detail' in a hard paving project that designers desire and demand. This helps to create discerning hard landscapes with stunning effects, propelling newly regenerated schemes to a 'streets ahead status'. Hardscape also understand that designers acknowledge the innovative ingredient that Kellen shows and as such firmly believe that choosing and specifying it allows the advanced material to quite simply speak for itself. We don't hide the European source of it because this is what helps create its advanced status and leading edge.

Numerous examples of this exciting material can be found throughout the UK and referenced in this brochure and Hardscape's website.

SUSTAINABLE

Hardscape highly regard the current and future demands for a sustainable material choice and Kellen comes with extremely high 'green' credentials. The Kellen factories have processes in place to reduce dust output into the atmosphere and to save energy and therefore reduce carbon emissions. Recycled water is used in the manufacturing process and raw materials are transported for 90% of their journey by river and canal ways direct to the factories. Upon request at least 15% of the raw materials used in the backing layer can be from recyclable sources. All products carry a CE mark. Products can be supplied with the Dutch Eco Label (Milieukeur) which guarantees the use of certified recycled building materials.



GREEN CREDENTIALS



THE RIVERSIDE KELLEN FACTORY AT HAVENWEG, HOLLAND



RECYCLED CONCRETE

As a minimum standard there will always be 15% recycled material consumed using production waste and unwanted previous concrete paving production. Also consider, unlike many other concrete producers, most of the transport network for raw material is by water with the production facility having its own quay and the production process is ISO 14001 Certified.

CYCLE FOR CONCRETE

Kellen has taken the recycled concrete model further with the development of C4C. Imagine a manufacturing plant of concrete paving products that take existing concrete paving from local authorities pavements and then produce new concrete products from 95% of the waste. When requested as a specific C4C standard, Hardscape can offer Kellen with additional recycled content which produces a 75% recycled material. For further information on the C4C process please consult your Hardscape representative.

BREEAM – GREEN GUIDE FOR HARD LANDSCAPING PCC PAVING UNITS (BASED ON 15% RECYCLED MATERIAL). ALL BUILDING TYPES FOR PEDESTRIAN AND LIGHTLY/HEAVILY TRAFFICKED AREAS.

| RATING | BLOCKS (SETTS & SLABS) | | FLAGS | |
|-----------------------|------------------------|-----------|-----------|-----------|
| | | | | |
| PREPARED SUB - BASE | B | A | A | |
| RECYCLED SUB - BASE | A | A+ | A+ | |
| NO SUB - BASE | | | | A+ |
| ELEMENT NUMBER | | | | |
| PREPARED SUB - BASE | 822120005 | 830120005 | 830120006 | |
| RECYCLED SUB - BASE | 822120037 | 830120025 | 830120026 | |
| NO SUB - BASE | | | | 824130005 |
| THICKNESS (MM) | 80 | 60 | 60 | 50 |

SUPPLY

SETTING NEW STANDARDS

LAYING

Traditionally laid by hand or when size dictates using a hand-held vacuum lifter on sand as a flexible paving system as opposed to laying on cementitious bedding mortars providing a cost effective paved scheme. The product can also be machine laid with equipment that Hardscape have helped develop. Hardscape also recommend using a selected kiln-dried 'silver' sand to complete the final laying process and finish providing a real alternative to natural stone products when circumstances require.

STANDARDS

All Kellen products conform to BSEN standards 1338, 1339 and 1340 with high quality classes for size tolerance, strength, resistance to freeze/thaw and wear. The products are also CE marked.



EXTENSIVE RANGE OF SIZES

DESIGN SETTS, SLABS & FLAG'S

AVAILABLE IN 50, 60, 70, 80, 90 AND 100 MM AS STANDARD THICKNESS.

CONFORMS TO EUROPEAN STANDARD EN 1338 + 1339
CHAMFER DETAILS AVAILABLE UPON REQUEST.

DESIGN SETTS & SLABS: AVAILABLE IN BRECCIA, LAVARO, LISCIO AND METALLO

| SERIES 100 MM | SERIES 105 MM | SERIES 110 MM | SERIES 150 MM | SERIES 200 MM |
|-----------------|--------------------|--------------------|-----------------------|-----------------------|
| 100 x 100 x 80 | 105 x 105 x 80 | 110 x 110 x 80 | 150 x 150 x 80 | 200 x 50 x 80 |
| 100 x 200 x 80 | 105 x 215 x 80/100 | 110 x 165 x 80/100 | 150 x 200 x 80 | 200 x 100 x 80 |
| 100 x 300 x 100 | 105 x 315 x 80 | 110 x 220 x 80/100 | 150 x 300 x 60/80/100 | 200 x 150 x 80 |
| | 105 x 425 x 100 | 110 x 330 x 80/100 | 150 x 400 x 80 | 200 x 200 x 60/80/100 |
| | | | 150 x 600 x 100 | 200 x 300 x 60/80/100 |
| | | | | 200 x 400 x 80/100 |
| | | | | 200 x 600 x 80/100 |

| SERIES 300 MM | SERIES 400 MM | SERIES 500 MM | SERIES 600 MM | SPECIALS |
|-----------------------|--------------------|--------------------|--------------------|-----------------------|
| 300 x 75 x 80 | 400 x 50 x 100 | 500 x 500 x 80/100 | 600 x 70 x 100 | 100 x 100 x 80 |
| 300 x 100 x 100 | 400 x 150 x 100 | 500 x 700 x 100 | 600 x 200 x 80/100 | 200 x 200 x 60/80/100 |
| 300 x 150 x 60/80/100 | 400 x 200 x 80/100 | 500 x 1000 x 100 | 600 x 300 x 100 | 300 x 300 x 60/80/100 |
| 300 x 200 x 60/80/100 | 400 x 400 x 80 | | 600 x 600 x 80 | 400 x 400 x 80 |
| 300 x 300 x 60/80/100 | | | 600 x 900 x 100 | 500 x 500 x 80/100 |
| 300 x 600 x 100 | | | | 600 x 600 x 80 |
| 300 x 900 x 100 | | | | 900 x 900 x 120 |
| | | | | 1000 x 1000 x 120/145 |

| DOUBLE SIZE | ADDITIONAL SIZE | NARROW SIZE | DEPTH SIZE |
|-----------------------|-----------------|---------------|---------------|
| 200 x 200 x 60/80/100 | 125 x 250 x 80 | 60 x 240 x 80 | 69 x 210 x 80 |
| 210 x 210 x 60/70/80 | | 80 x 240 x 80 | |
| 220 x 220 x 80 | | | |

FLAGS: AVAILABLE IN BRECCIA, LAVARO, PERLANO AND METALLO

| SERIES 200 MM | SERIES 300 MM | SERIES 400 MM | SERIES 500 MM |
|-------------------------|----------------------------|-------------------------|-------------------------|
| 200 x 200 x 50/60/70/80 | 300 x 150 x 45/50/60/70/80 | 400 x 200 x 50/60/70/80 | 500 x 200 x 50/60/70/80 |
| 200 x 400 x 50/60/70/80 | 300 x 300 x 45/50/60/70/80 | 400 x 400 x 50/60/70/80 | 500 x 500 x 50/60/70/80 |
| 200 x 500 x 50/60/70/80 | | 400 x 600 x 50/60/70/80 | |

SERIES DENOTES WIDTH

BRECCIA

100% NATURAL STONE COATING

Breccia is an exclusive concrete paver with a top layer of carefully chosen natural stone aggregates without sand and pigments.

The top layer comes in four grain sizes of aggregate which makes it extremely hard wearing and less susceptible to general fading. The natural, water-etched appearance makes the Breccia particularly suitable for prestigious projects.

- 100% natural stone surface
- four grain sizes of aggregate
- no colour pigments
- etched with high pressure water.

WATER-ETCHED



BRECCIA DESIGN SETTS & SLAB COLOURS



BRECCIA FLAG COLOURS



Due to the printing process colours shown in this brochure may differ from the reality. Please ask your account manager for samples.

**TOFFEE
FACTORY,
NEWCASTLE
UPON TYNE**

**MATERIALS USED:
BRECCIA TAGENTA C, D & E SETTS
SIZE: 200 x 600 x 80 MM**





GREENWICH PENINSULA, LONDON

MATERIALS USED:
BRECCIA ALPI, MARON,
NERO AND TAGENTA SETTS A-E
SIZES: 100 x 200 x 80 MM
200 x 200 x 80 MM

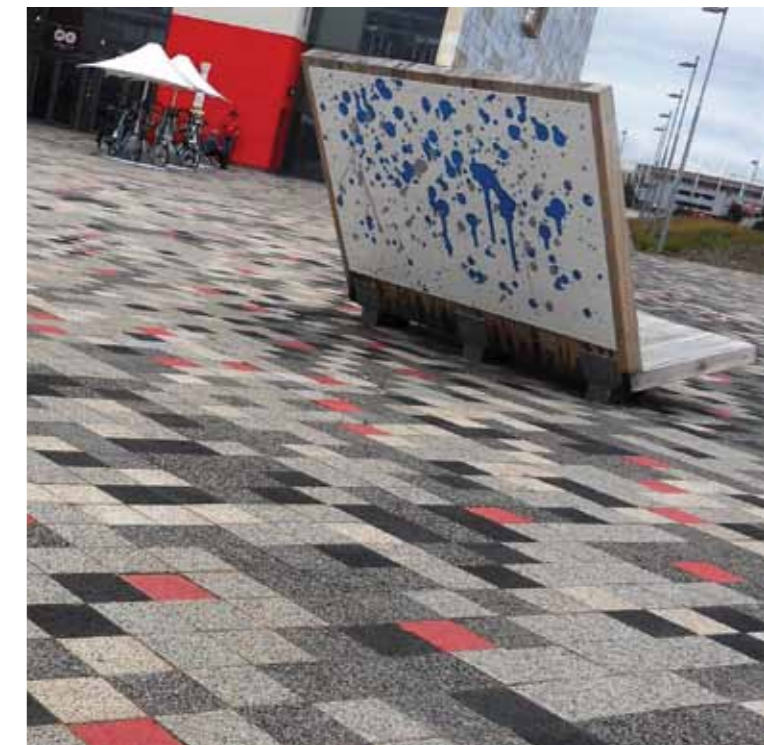
CUBE THEATRE, CORBY

MATERIALS USED:
BRECCIA GIALLO AND ROSSO SETTS
SIZES: 50 x 400 x 100 MM
200 x 100 x 80 MM



LONDON CABLE CAR, GREENWICH

MATERIALS USED:
BRECCIA TAGENTA A, B, C, D & E
SIZE: 100 x 200 x 80 MM



MIDDLESBROUGH COLLEGE, MIDDLEHAVEN

MATERIALS USED:
BRECCIA TAGENTA MIX A, B, C & E
SIZE: 200 x 200 x 80 MM





CHAPEL STREET, SALFORD

MATERIALS USED:
BRECCIA GRIGIO, BIANCO,
TAGENTA B, D & E
SIZE: 150 x 300 x 80 MM



ST BERNADETTE'S SCHOOL, STENHOUSEMUIR

MATERIALS USED:
BRECCIA BIANCO, NERO, NEGRI AND GRIGIO
SIZES: 200 x 600 x 80 MM
100 x 100 x 80 MM





CANK STREET, LEICESTER

MATERIALS USED:
BRECCIA COTTRIO, MARON,
ROSSO & NERO
SIZES: 100 x 100 x 80 MM
100 x 200 x 80 MM



NETWORK RAIL HQ, MILTON KEYNES

MATERIALS USED:
BRECCIA TAGENTA B, C, D & E
SIZES: 80 x 240 x 70 MM
300 x 300 x 80 MM
300 x 300 x 60 MM



LAVARO

70% NATURAL STONE COATING

Lavaro is a more cost-effective water etched paving product with a range of pigment-supported colours.

The natural stone aggregates come in one grain size and form approximately 70% of the top surface. The colour of the remaining 30% is enhanced with a small amount of UV stable pigment. Different sizes and colours make the Lavaro easily to combine in creative designs. This makes it a good investment for public spaces where durability and appearance count.

- 70% natural stone surface
- one grain sizes of aggregate
- no colour pigments
- etched with high pressure water.

WATER-ETCHED



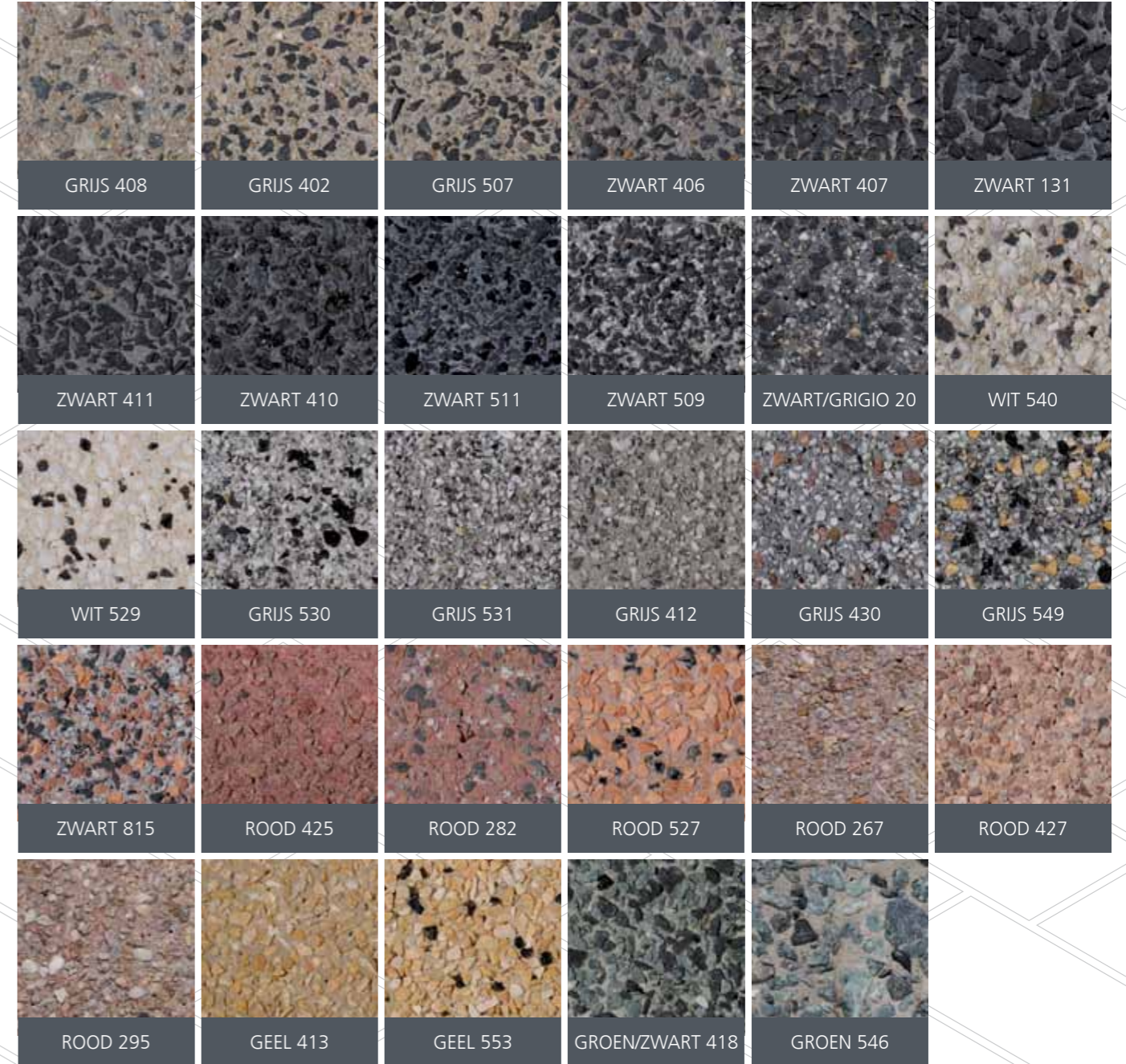
LAVARO DESIGN SETTS & SLAB COLOURS



BESPOKE COLOURS ALSO AVAILABLE UPON REQUEST.

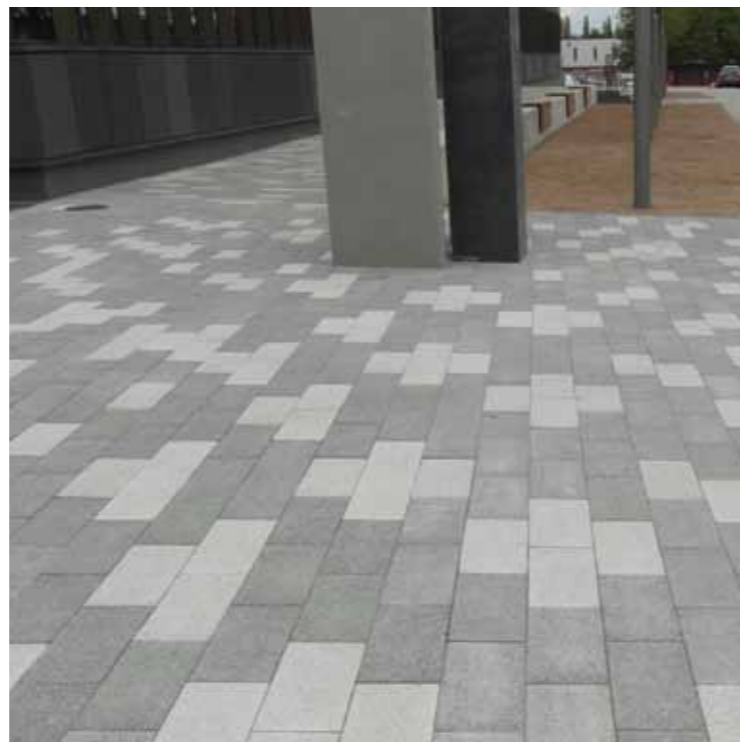
Due to the printing process colours shown in this brochure may differ from the reality. Please ask your account manager for samples.

LAVARO FLAG COLOURS



UNIVERSITY QUARTER, STOKE-ON- TRENT

MATERIALS USED:
TAGENTA A & LAVARO GROEN,
GRIJS & WIT
SIZE: 200 x 600 x 80 MM



HEADFIELD ROAD JUNIOR SCHOOL, DEWSBURY

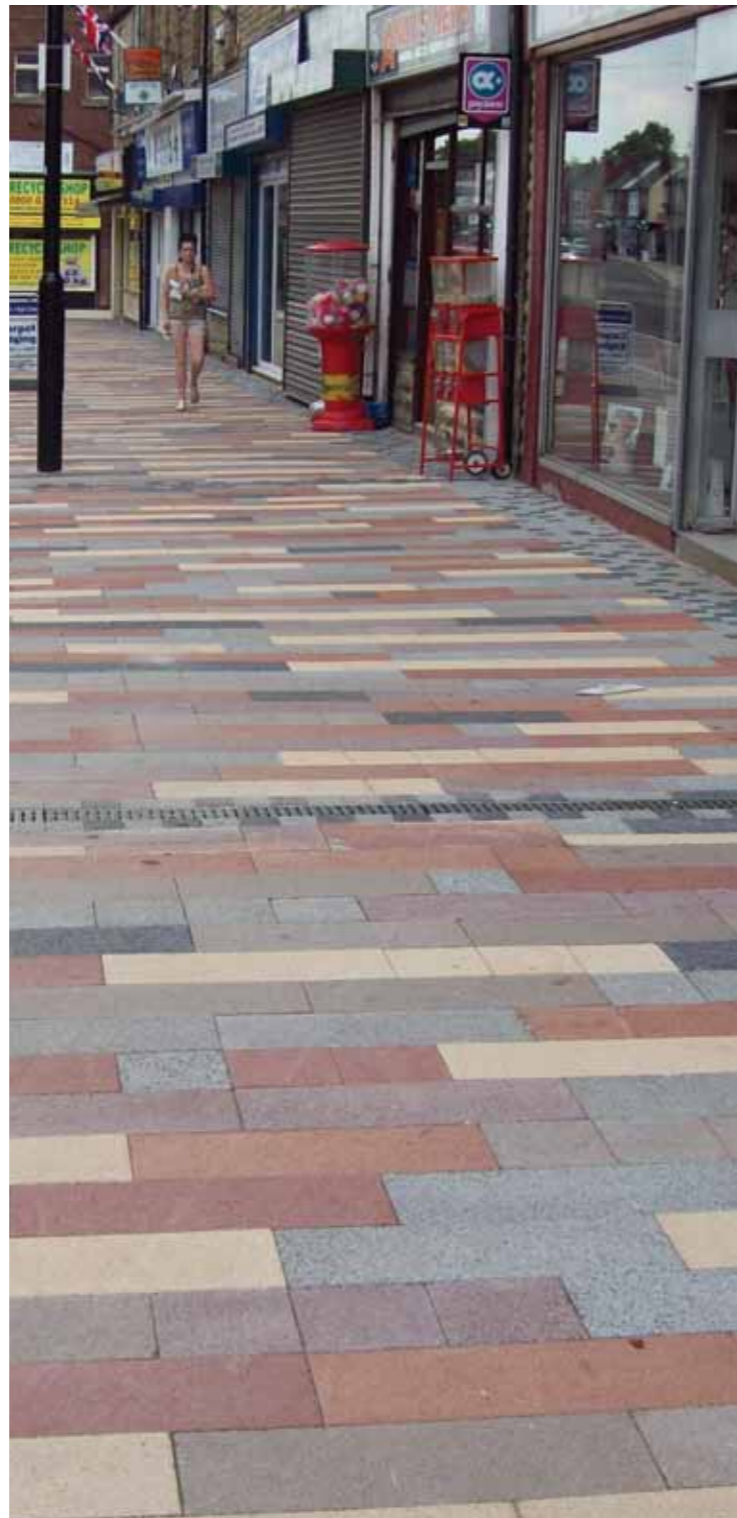
MATERIALS USED:
LAVARO GRIJS, ZWART, GROEN
& WIT
SIZE: 300 x 300 x 80 MM



HIGH STREET, GOLDTHORPE

MATERIALS USED:
LAVARO ROOD, ORANJE, PAARS
& GRIJS

SIZES: 100 x 100 x 80 MM
100 x 200 x 80 MM
200 x 600 x 80 MM
200 x 200 x 80 MM



LINTON ROAD, BARKING

MATERIALS USED:
LAVARO SALMON (BESPOKE) & ZWART
SIZES: 150 x 400 x 80 MM
100 x 200 x 80 MM



LISCIO

100% NATURAL STONE COATING

With its high quality ground finish, Liscio displays style and exclusivity.

The flat surface in combination with high slip resistance makes it suitable for commercial areas. Liscio can also be used to articulate design elements in combination with Breccia, Martello and Sabio. Extra large sizes underline the uniqueness of this product.

- 100% natural stone surface
- four grain sizes of aggregate
- no colour pigments
- ground

GROUND



LISCIO DESIGN SETTS & SLAB COLOURS



THE PLAYHOUSE, WHITLEY BAY

MATERIALS USED:
LISCIO NERO
SIZES: 200 x 300 x 100 MM
600 x 300 x 100 MM
900 x 300 x 100 MM



Due to the printing process colours shown in this brochure may differ from the reality. Please ask your account manager for samples.

MARINE HALL GARDENS, FLEETWOOD

MATERIALS USED:

LISCIO TAGENTA E & B

SIZES: 300 x 300 x 80 MM

600 x 600 x 80 MM

400 x 50 x 100 MM



SHOPPING CENTRE, HENGELLO, HOLLAND

MATERIALS USED:

LISCIO GIALPI

SIZES: 400 x 200 x 80 MM



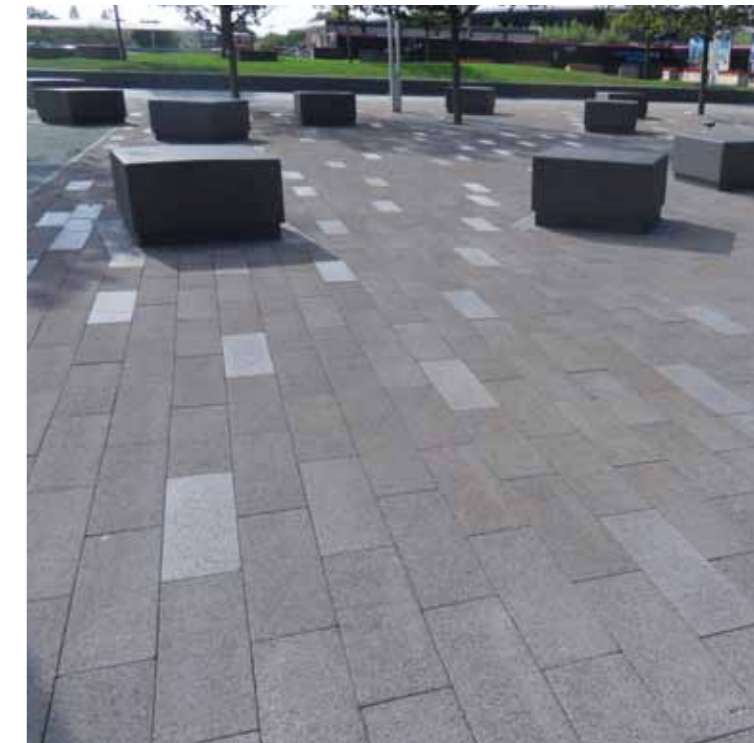
RABOBANK, HERTEN HOLLAND

MATERIALS USED:
LISCIO TAGENTA A
SIZE: 600 x 70 x 100 MM



CANK STREET, LEICESTER

MATERIALS USED:
LISCIO NERO (ACCENT CHANNEL)
WITH BRECCIA MARON, COTTRIO
& ROSSO SETTS
SIZE: 300 x 300 x 80 MM



GREENWICH PENINSULA, LONDON

MATERIALS USED:
LISCIO MARON
BRECCIA ALPI, MARON & NERO
SIZE: 200 x 600 x 100 MM





PERLANO

MOTHER-OF-PEARL & RAW NATURAL STONE

Perlano has a unique facing layer consisting of large natural aggregates and sea shells.

The materials are bonded in sand as if they were washed ashore...

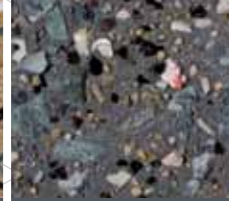


WATER-ETCHED

PERLANO FLAG COLOURS



GIALLO/VERDE 504



NERO/VERDE 505



NERO 093



BIANCO 089



GIALLO/
MARRONE 085



TERRA/
MARRONE 087



GRIGIO 095

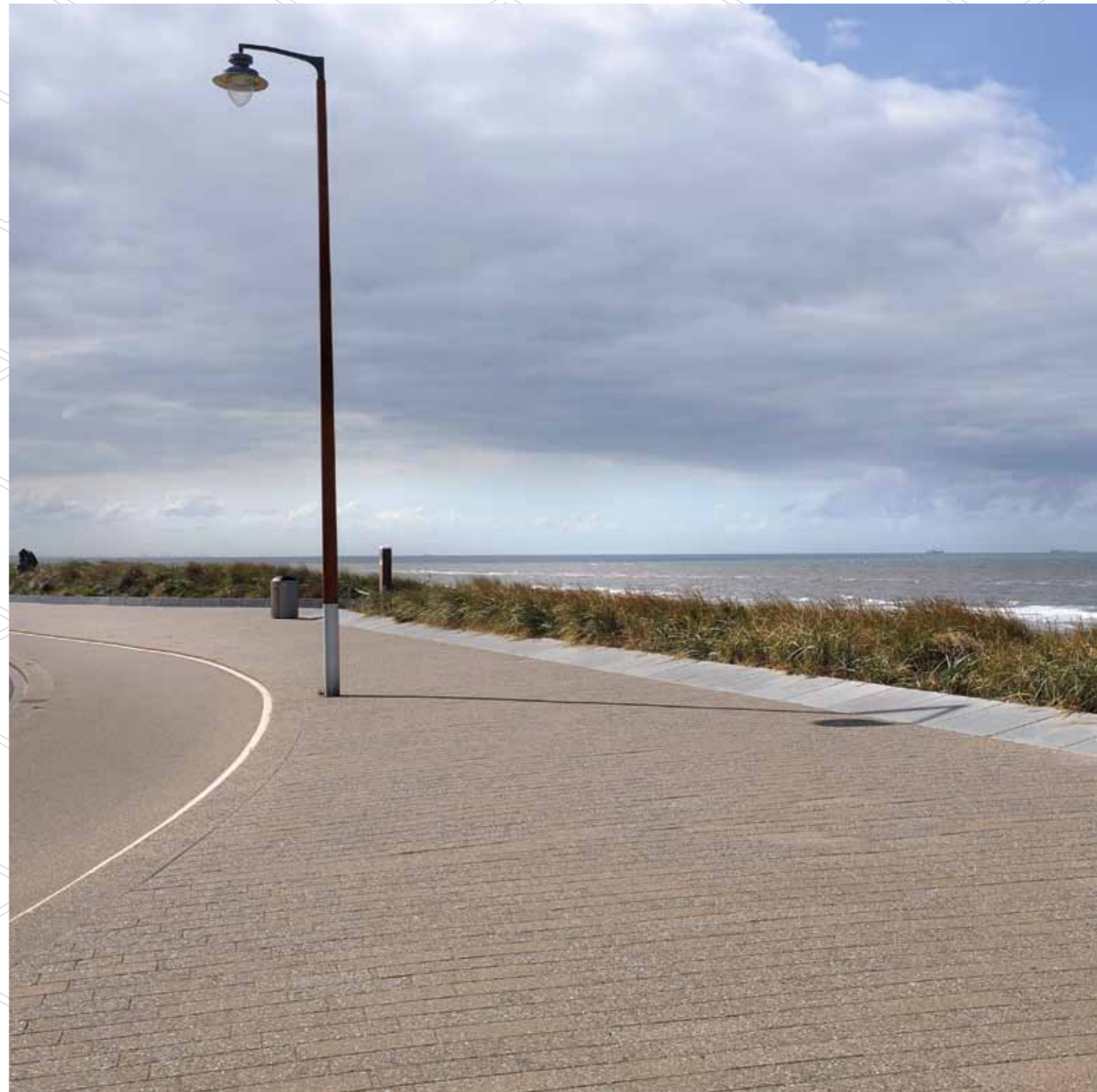


VERDE 091

Due to the printing process colours shown in this brochure may differ from the reality. Please ask your account manager for samples.

SEA FRONT, KATWIJK, HOLLAND

MATERIALS USED:
PERLANO GIALLO/VERDE 503 & 504
SIZE: 200 x 500 x 80 MM



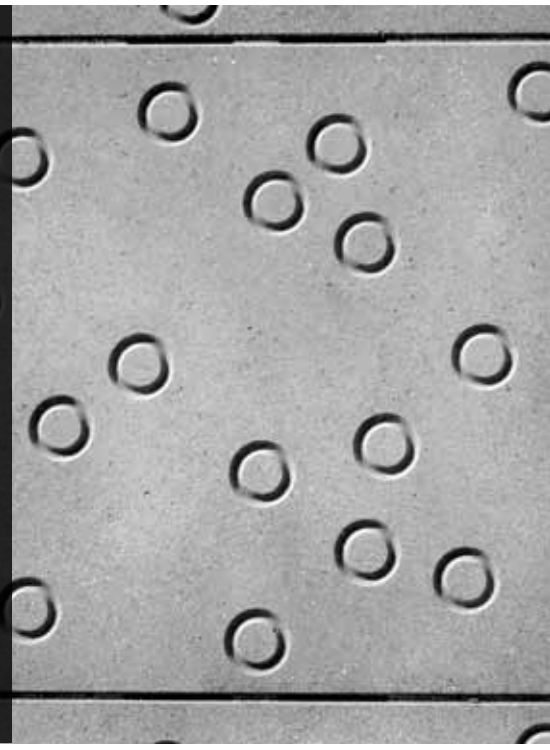
AESTHETIC

STREET ART PAVING

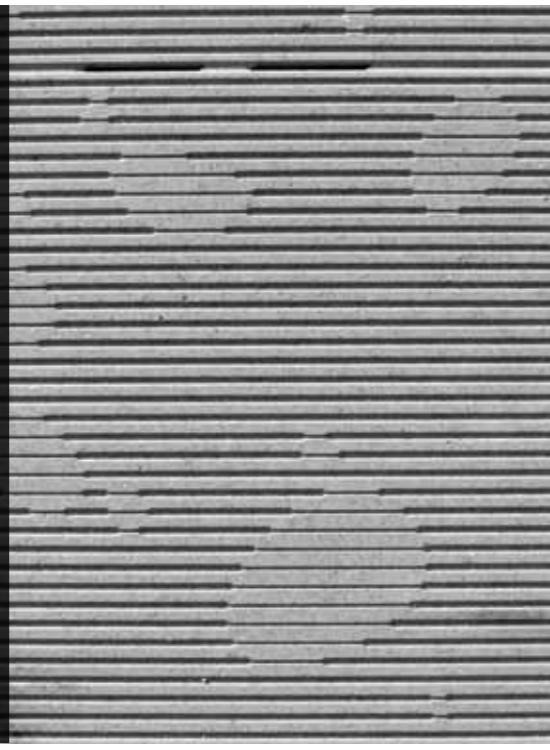
Street Art paving slabs are unique and offer the chance to be creative with your own imagination and flair! A contemporary collection of inspirational ideas have been created by Dutch designer Baukje Trenning to enhance areas of paving in the local landscape when combined with standard Kellen products or natural stone materials.

Available in 600mm x 600mm x 60mm, the collection consists of some 'neutral' designs together with some very strong patterns that reinforce the nature and form of public open space. There is also the opportunity to create and apply your own design and pattern and submit a challenge to our production team for consultation and potentially make a reality! Ask Hardscape for further details.

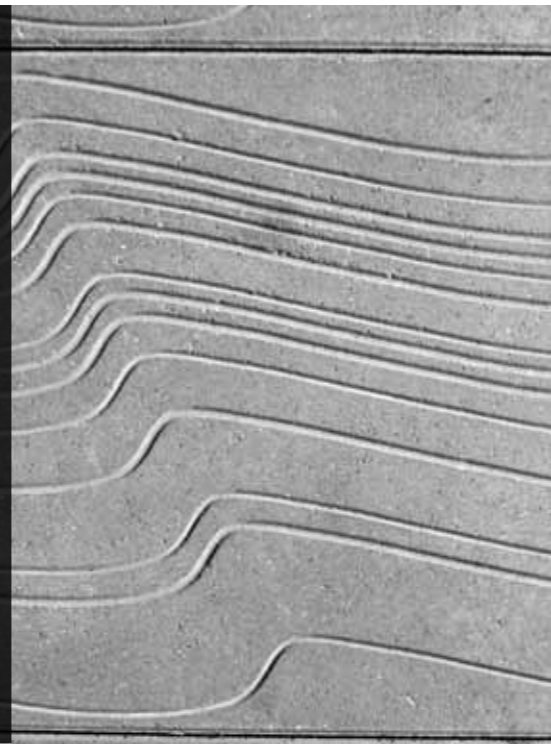
CONCRETE CONFETTI - A NUMBER OF 'RINGS' SCATTERED RANDOMLY



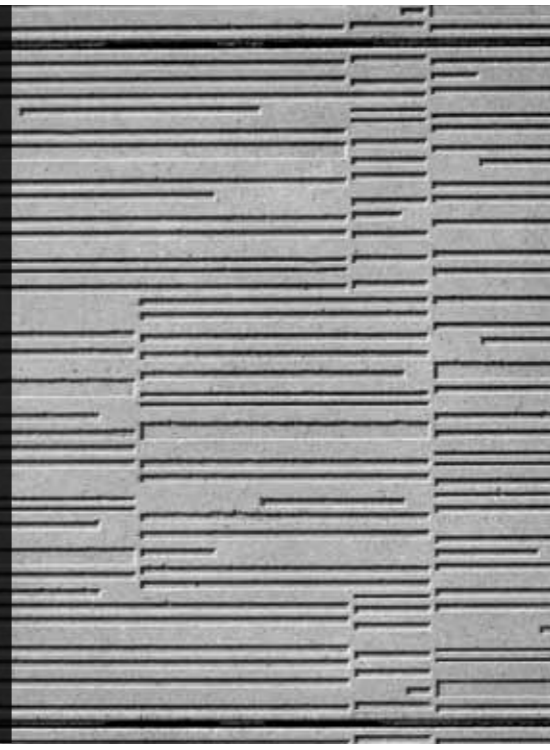
MYSTERY SPOTS - REFLECTION OF LIGHT HELPS TO CREATE DIFFERENT SHAPES



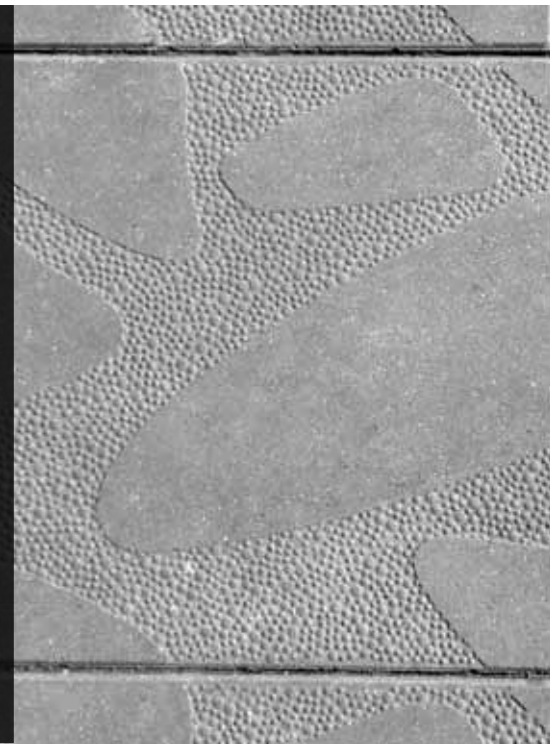
STREAMLINED SCRATCHES - SLEEK LINES EXPRESSING A FLOATING MOTION



BINARY FIELDS - RHYTHMIC PATTERN OF LINES



FLOATING PEBBLES - FLOATING STONES CREATING A STEPPING STONE EFFECT



AESTHETIC



DOUBLE EXCEL

CUSTOM-MADE

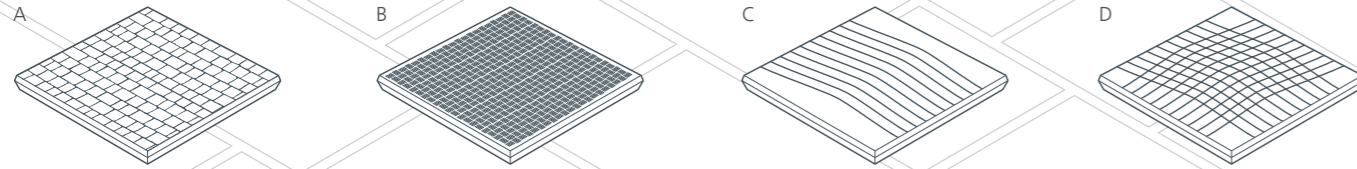
Double Excel slabs are custom-made to offer a unique solution. Made to order with specialist expertise these slabs cover a large area with ease and offer practicality along with functionality offering collection wells with hidden and open drainage channels. Available in a variety of colours and specialised shapes with bespoke colours that can be discussed and manufactured if required.

APPLICATION AND LAYING

Mechanical vacuum handling is required for lifting and positioning of these slabs due to their size and weight. Hardscape can provide full details and instructions for specialist application by the contractor when requested.



DIMENSIONS




PATTERN SLABS (WITH CHAMFER EDGE)


| SIZES (M) | STYLE | DIMENSIONS (MM) | TRAFFIC CLASS |
|-----------|--------------------------|---------------------|---------------|
| 2 x 2 | COBBLESTONE (A) | 1,990 x 1,990 x 160 | 600 |
| 2 x 2 | EMBOSSSED (B) | 1,990 x 1,990 x 160 | 600 |
| 2 x 1.5 | EMBOSSSED | 1,990 x 1,990 x 160 | 600 |
| 2 x 1 | EMBOSSSED | 1,990 x 1,990 x 160 | 600 |
| 2 x 2 | SMOOTH WAVE (C) | 1,990 x 1,990 x 160 | 600 |
| 2 x 2 | SMOOTH WAVE CROSSING (D) | 1,990 x 1,990 x 160 | 600 |

FACET EDGE

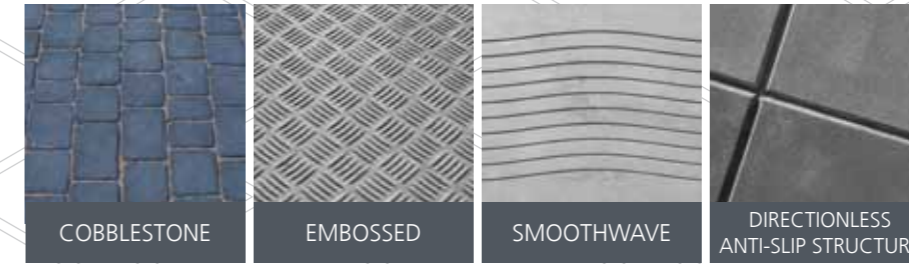
| SIZES (M) | STYLE | DIMENSIONS (MM) | TRAFFIC CLASS |
|-----------|-----------------------------------|---------------------|---------------|
| 2 x 1 | DIRECTIONLESS ANTI-SLIP STRUCTURE | 1,990 x 990 x 140 | 450 |
| 2 x 1 | DIRECTIONLESS ANTI-SLIP STRUCTURE | 1,990 x 990 x 160 | 600 |
| 2 x 2 | DIRECTIONLESS ANTI-SLIP STRUCTURE | 1,990 x 1,990 x 140 | 450 |
| 2 x 2 | DIRECTIONLESS ANTI-SLIP STRUCTURE | 1,990 x 1,990 x 160 | 600 |

ON REQUEST CAN BE FITTED WITH A BITUMEN-COATED STAINLESS STEEL CORNER EDGE OR STRIP COATING

|  | TRAFFIC CLASS 450 |
|---|-------------------|
| SLAB THICKNESS | 140 MM |
| AXLE LOADS | 15 TON |
| SOLID FORKLIFT TYRES | 9 TON |
| PNEUMATIC (OR AIR) FORKLIFT TYRES | 10,7 TON |
| POINT LOADS | 6 TON |

|  | TRAFFIC CLASS 600 |
|--|-------------------|
| SLAB THICKNESS | 160 MM |
| AXLE LOADS | 20 TONS |
| SOLID FORKLIFT TYRES | 10 TONS |
| PNEUMATIC (OR AIR) FORKLIFT TYRES | 12 TONS |
| POINT LOADS | 7 TONS |

STANDARD PATTERNS



COLOURS



FLORIJN
COLLEGE,
TETERINGEN,
HOLLAND

MATERIALS USED:
GRIJS, EMBOSSSED
SIZE: 2000 x 2000 x 160 MM





FLORIJN COLLEGE, TETERINGEN

WIJKPARK OVERBOS, HOLLAND

MATERIALS USED:
GRIJS, EMBOSSED
SIZES: 2000 x 1000 x 100 MM
2000 x 1000 x 100 MM



MAASBOULE- VARD, DEN BOSCH, HOLLAND

MATERIALS USED:
GRIJS, SMOOTH WAVE
SIZES: 2000 x 1000 x 100 MM
2000 x 1000 x 100 MM



ELKERLIEK ZIEKENHUIS, HELMOND, HOLLAND

MATERIALS USED:
GRIJS, SMOOTH WAVE
SIZES: 2000 x 2000 x 160 MM



AESTHETIC



DOUBLE EXCEL METAL-EDGED

DOUBLE EXCEL METAL-EDGED

Double Excel can also be ordered with a metal edge which helps to protect the slab. These tend to be used where large areas require a design towards an old industrial feel but in-keeping with a modern approach to hard landscaped locations.

When compared to the standard Double Excel faceted slabs, the metal edge versions have a slightly smaller joint between them and have no V-facet. As a result the linear pattern is more visible and therefore can be incorporated in to the design strategy from the outset to create a definitive aesthetic.



BUS STATION, BREUKELLEN, HOLLAND

MATERIALS USED:
ZWART, METAL EDGE
SIZES: 1000 x 1000 x 140 MM
2000 x 500 x 330 MM



FIRESTATION, LEIDSCHE RIJN, HOLLAND

MATERIALS USED:
GRIJS, METAL EDGE
SIZES: 2000 x 2000 x 140 MM
2000 x 500 x 330 MM



METALLO



Metallo offers a whole new dimension to creating new and exciting areas of hard landscaping with concrete products that incorporate a metallic appearance.



OXI

Concrete pavers where metal particles have been added to the mixture that gives an unusual and unique 'rust' appearance as the product weathers over time.



CAP

The option of pavers and slabs that are fitted with a metal cap made of stainless steel, aluminium or Corten steel that can be used to indicate pedestrian routes or parking areas.



TALC

A unique and aesthetic option to create urban elements with a metallic coating in powder form that is sprayed onto the concrete which offers an attractive and exclusive option for products that would otherwise have to be manufactured in metal.



BUSINESS CENTRE, AMSTERDAM, HOLLAND

MATERIALS USED:
METALLO BRASS CAP
SIZES: 197 x 47 x 80 MM
500 x 500 x 70 MM

HEMA BUILDING, AMSTERDAM, HOLLAND

MATERIALS USED:
METALLO CORTEN STEEL CAP
SIZE: 500 x 500 x 60 MM





DUTCH DESIGN HOTEL, AMSTERDAM, HOLLAND

MATERIALS USED:
METALLO OXI
SIZES: 400 x 400 x 80 MM
200 x 100 x 80 MM
400 x 250 x 1000 MM



ANGEL FIELD, HOPE UNIVERSITY, LIVERPOOL

MATERIALS USED:
METALLO GOLD TALC LETTERING



PERMEABLE

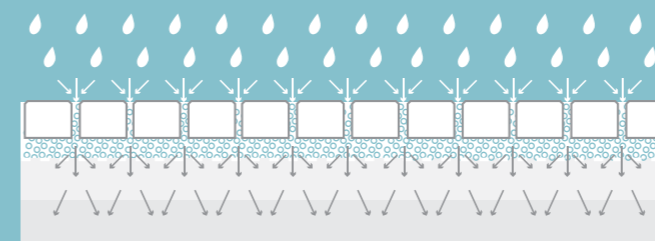
H2O PAVER

The H2O-paver is a permeable block paver which is available in seven standard concrete colours, as well as in colours of Lavaro and Breccia. The constructive properties of this paver are excellent and make it suitable for roads with high traffic intensities. The gaps are placed in such a way that different laying patterns are possible. The infiltration rate is dependent upon the jointing material used.

The H2O-paver is available in two sizes with 5mm chamfers:

1. 210 x 105 x 80mm: has six gaps which amount to 2.5% of the total surface. The visible gaps remind people in the neighbourhood that the pavement has an ecological application.
2. 210 x 105 x 100mm has larger gaps (5% of the total surface) and is used for places with heavy traffic loads such as industrial estates, car parks and other public spaces with large paved areas.

In order to keep high infiltration rates, both pavers should be maintained over regular intervals. Our advice is to brush at least twice a year and to replace the jointing materials every five years with the help of vacuum cleaning.

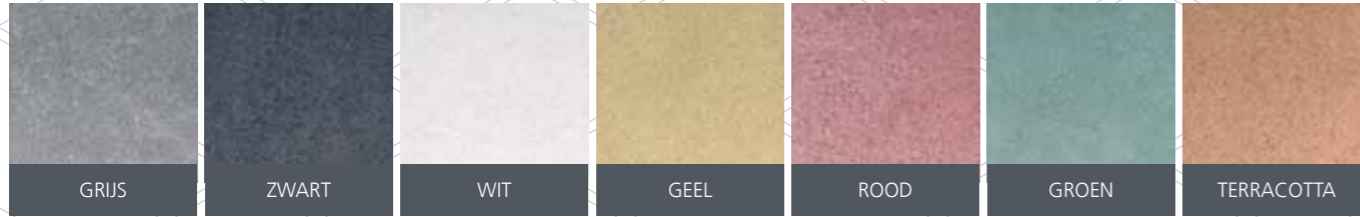


H2O PAVER

| TYPE | SIZE (MM) | TECHNIQUE | PERMEABILITY | COATING | MACHINE PACKAGE |
|---------|-------------------|--------------|--------------|-----------------|---------------------|
| PASSING | 210 X 105 X 80MM | CUT-OUT 2.5% | 500 - 2500* | BRECCIA, LAVARO | 210 X 100,50 X 80MM |
| PASSING | 210 X 105 X 100MM | CUT-OUT 5.0% | 1000 - 5000* | BRECCIA, LAVARO | N/A |

*DEPENDENT UPON JOINTING MATERIALS

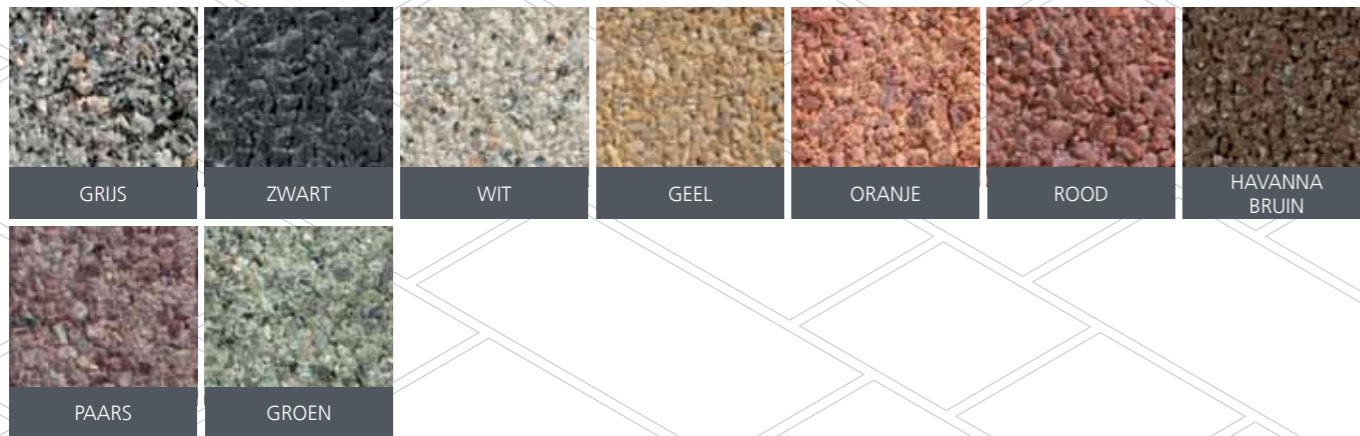
STANDARD COLOURS



BRECCIA



LAVARO



OSS,
NORTH
BRABANT,
HOLLAND

MATERIALS USED:
LAVARO ROOD, HAVANNA BRUIN
SIZES: 210 x 105 x 80 MM
105 x 105 x 80 MM



KERBS

KERB SYSTEMS AND EDGINGS

A wide range of complementary kerbs, channels and accessories are available to provide a functional and integrated border between highway and pavement as well as effective water management solutions.

LAVARO COLOURS

| | | | |
|---|---|---|---|
|  |  |  |  |
| WIT 701 | WIT 705 | GRIJS 712 | ZWART 705 |
|  |  |  |  |
| ZWART 704 | HAVANNA BRUIN | STANDARD GRIJS | STANDARD ZWART |
|  |  |  | |
| BONT 703 | GIG | ZWART GROEN 701 | |

MATERIALS USED:
LAVARO HALF BATTERED KERBS
SIZE: 180/250 X 250 X 1000 MM HAVANNA BRUIN



KERB RANGE

Our extensive range are available in the Lavarò finish to complement the Kellen range of pavers and flags creating a natural transition from pedestrian to highway or landscaping. A choice of coherent colours allows for options to match or to create a contrast for marks or guidance.

All of our kerb and channel ranges are designed to incorporate form and function within the single unit thereby simplifying ordering and installation. Below highlights a typical selection from our complete range of kerbs.

FLUSH KERBS
80 x 200 x 1000 MM
ZWART 704

FLUSH KERBS
120 x 250 x 1000 MM
ZWART/GROEN 701

BULLNOSE KERBS
100 x 200 x 1000 MM
*ZWART GRIGIO 20

BULLNOSE KERBS
150 x 400 x 1000 MM
GRIJS 712



HALF BATTERED KERBS
130/150 x 160 x 1000 MM
GIG

HALF BATTERED KERBS
130/150 x 250 x 1000 MM
*GROEN 701

HALF BATTERED KERBS
130/150 x 250 x 1000 MM
WIT 705

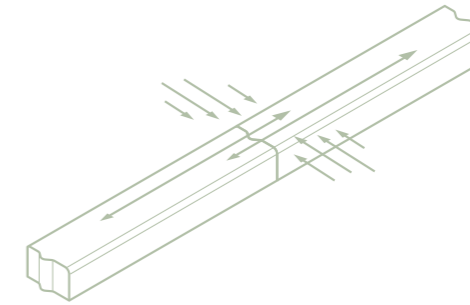
HALF BATTERED KERBS
130/150 x 250 x 1000 MM
ZWART 704



* Colour swatch not available

KERB RANGE

-  FLUSH KERBS
-  BULLNOSE KERBS
-  HALF BATTERED KERBS
-  FLAT CHANNEL
-  SPLAYED KERBS
-  CROSSOVER KERBS
-  ANGLE TOP KERBS



V-TYPE CONNECTION

V-type connection for a better resistance against tilting in situations with heavy traffic for the long term, guiding the kerbs in a straight line during installation.

HALF BATTERED KERBS
180/200 x 160 x 1000 MM
BONT 703

HALF BATTERED KERBS
180/200 x 250 x 1000 MM
HAVANNA BRUIN

HALF BATTERED KERBS
170/200 x 400 x 1000 MM
GRIJS 712

HALF BATTERED KERBS
230/250 x 200 x 1000 MM
BIARDO LIGHT
(BESPOKE ONLY)



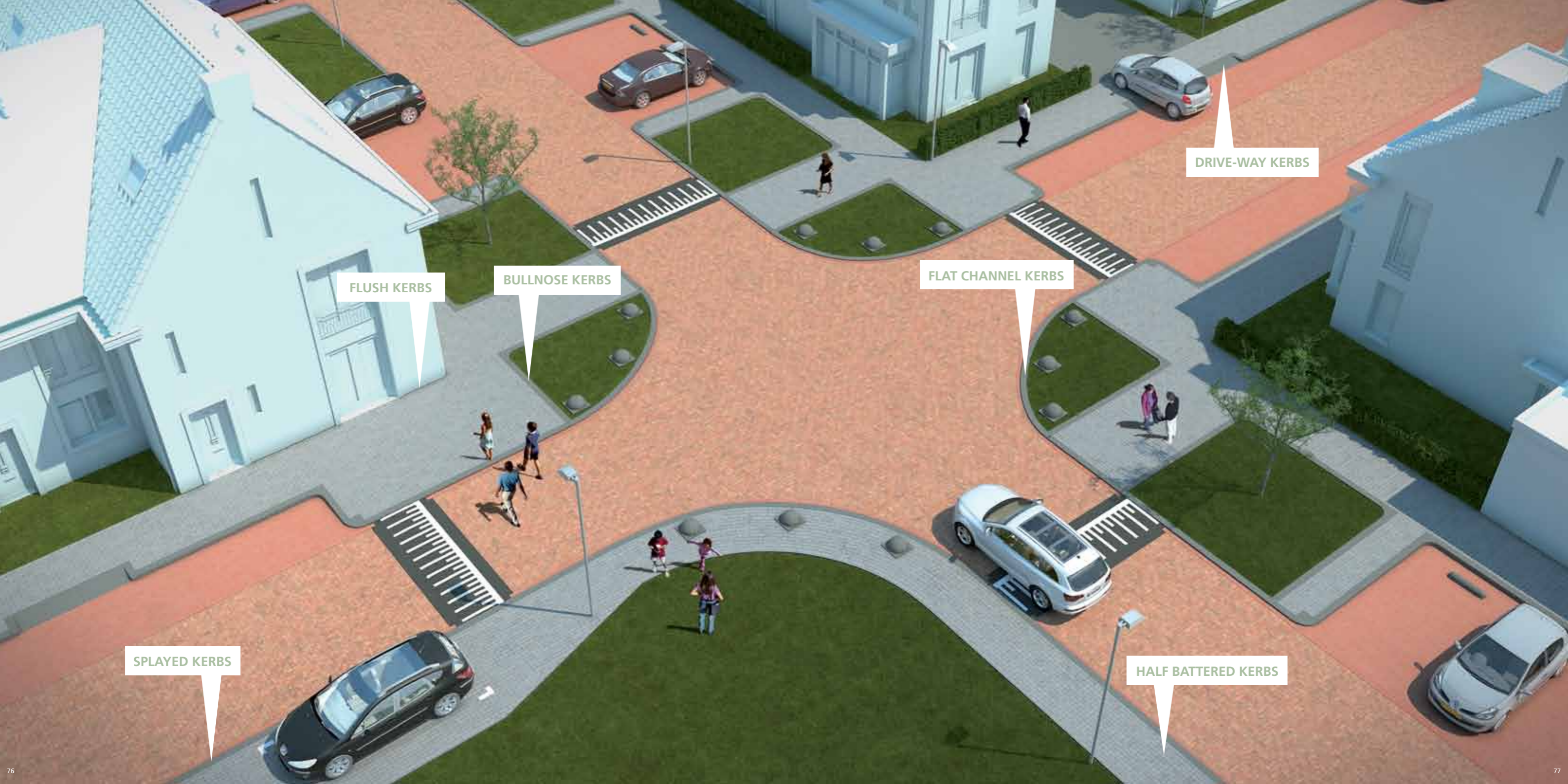
HALF BATTERED KERBS
280/300 x 240 x 1000 MM
ZWART 704

HALF BATTERED KERBS
280/300 x 240 x 1000 MM
BIARDO DARK
(BESPOKE ONLY)

HALF BATTERED KERBS
280/300 x 300 x 1000 MM
ZWART GRIGIO 20

HALF BATTERED KERBS
380/400 x 250 x 1000 MM
BONT 703





DRIVE-WAY KERBS

FLUSH KERBS

BULLNOSE KERBS

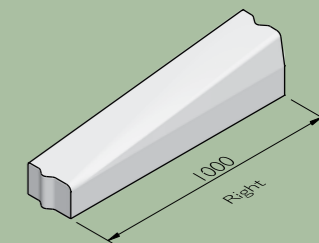
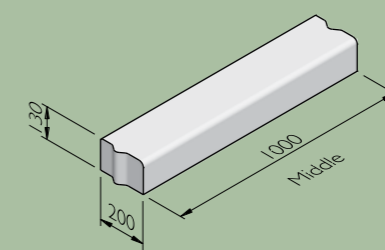
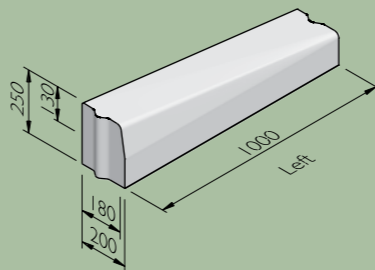
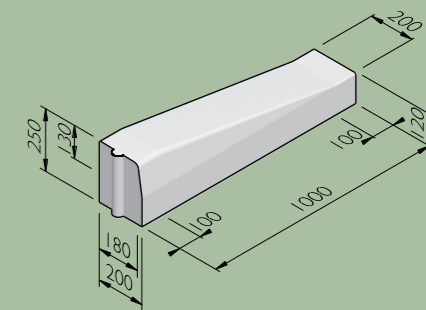
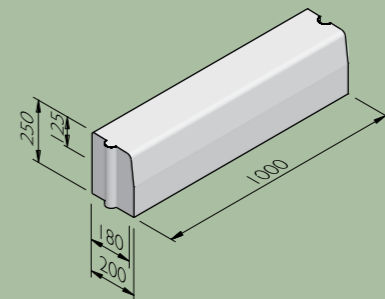
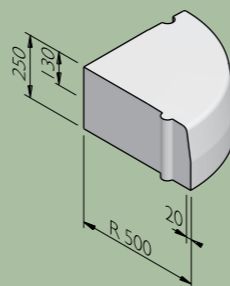
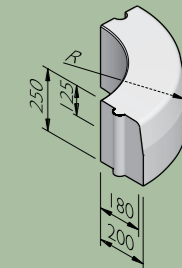
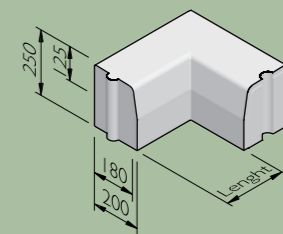
FLAT CHANNEL KERBS

SPLAYED KERBS

HALF BATTERED KERBS

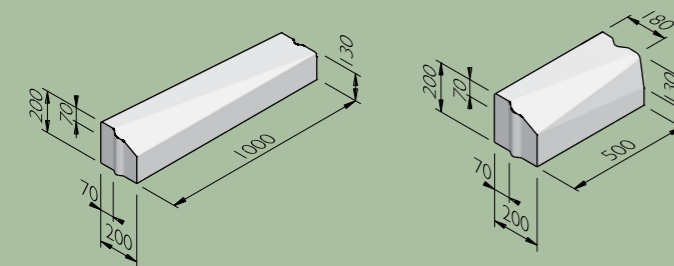
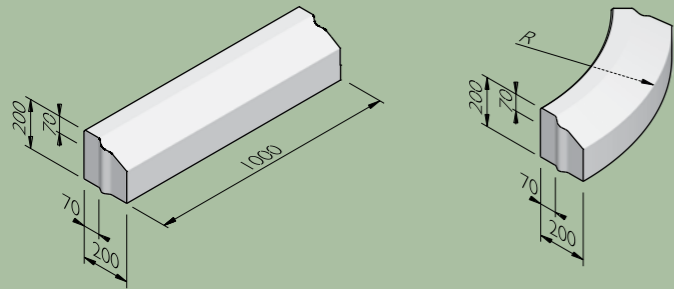
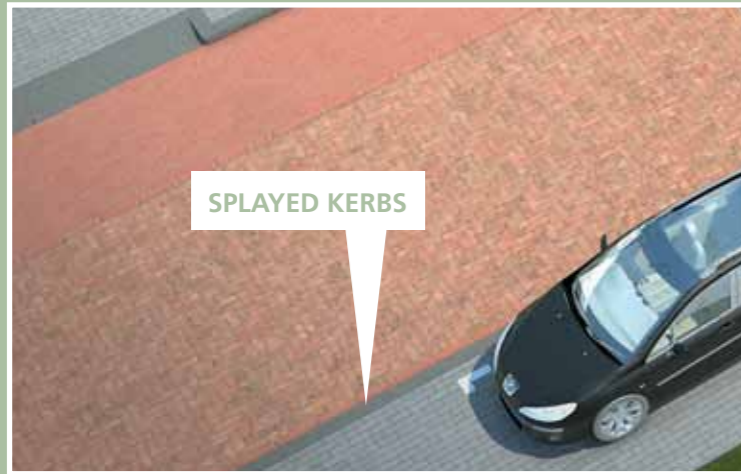


HALF BATTERED KERBS



The dimensions shown are just a small part of a very wide range of models. Please contact us for further information about our total range of dimensions.

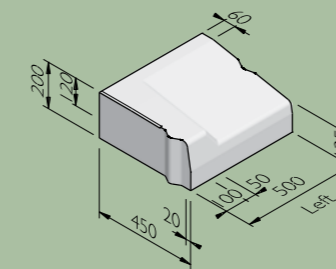
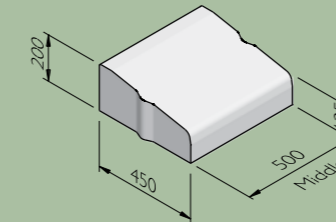
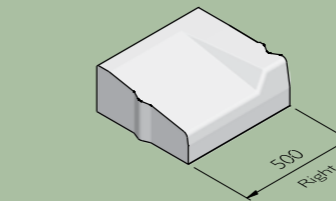
SPLAYED KERBS



The dimensions shown are just a small part of a very wide range of models. Please contact us for further information about our total range of dimensions.



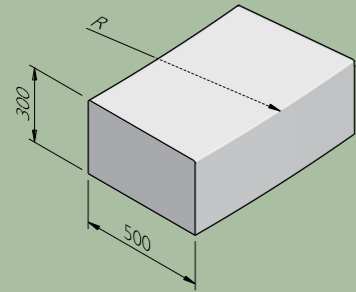
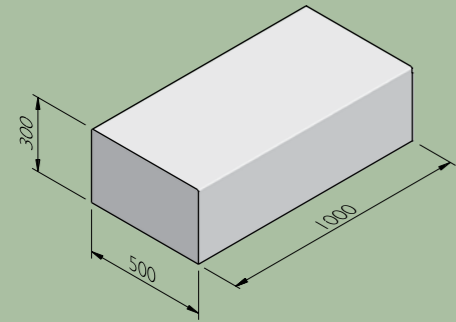
DRIVE-WAY KERBS



The dimensions shown are just a small part of a very wide range of models. Please contact us for further information about our total range of dimensions.



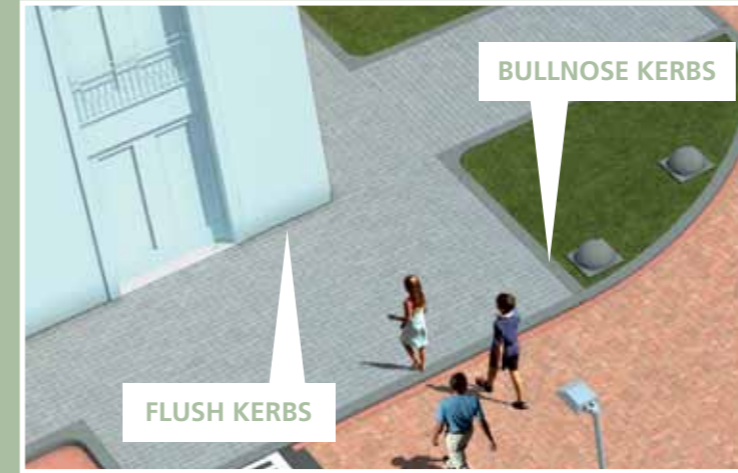
FLAT CHANNEL KERBS



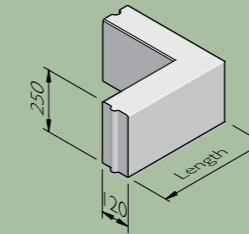
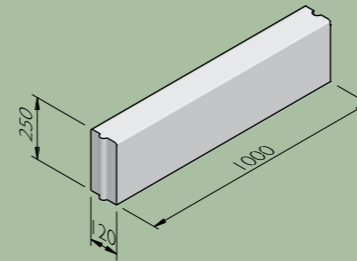
The dimensions shown are just a small part of a very wide range of models. Please contact us for further information about our total range of dimensions.



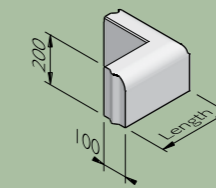
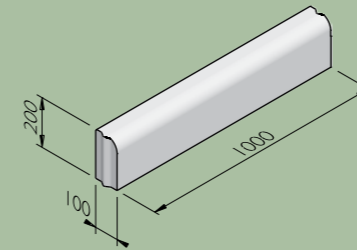
FLUSH AND BULLNOSE KERBS



FLUSH KERBS



BULLNOSE KERBS

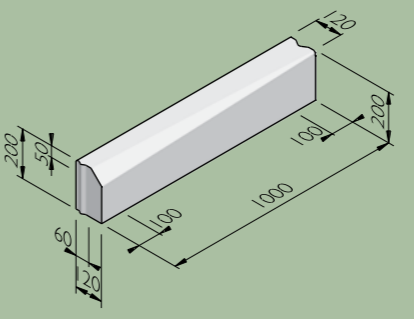
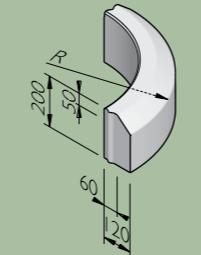
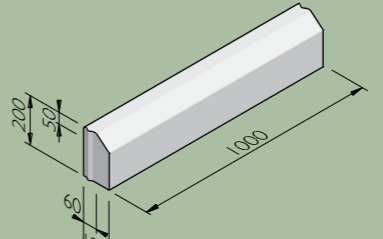
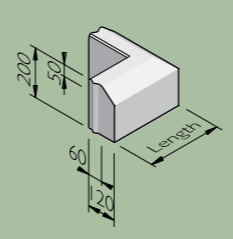


The dimensions shown are just a small part of a very wide range of models. Please contact us for further information about our total range of dimensions.





ANGLE TOP KERBS



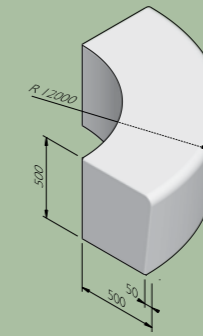
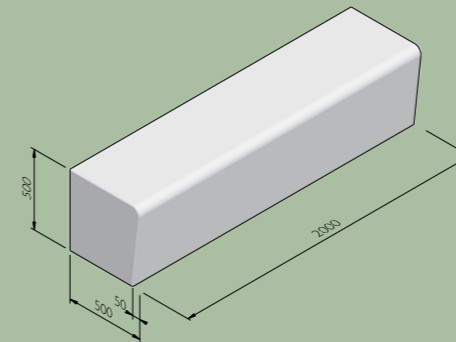
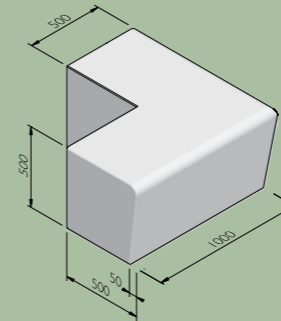
The dimensions shown are just a small part of a very wide range of models. Please contact us for further information about our total range of dimensions.



ELEMENTALE

Elementale is a complete product range of innovative seating elements that can help to shape an outdoor space ingeniously and economically!

Perfect for creating green zones on busy squares or around shopping centres, play areas and within school playgrounds. With the Elementale range every shape is possible including curved, straight and bespoke components. In addition to solid concrete versions the straight Elementales can also be ordered with a wooden top seating fixture to provide a more comfortable seat.

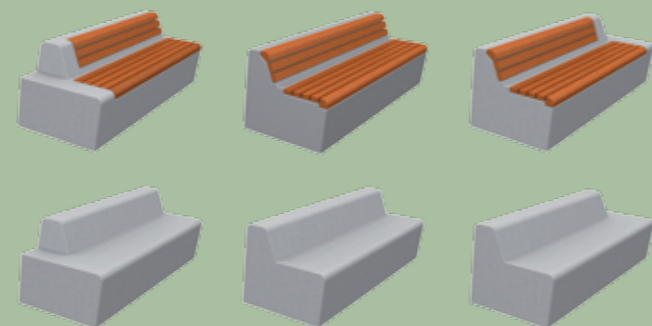




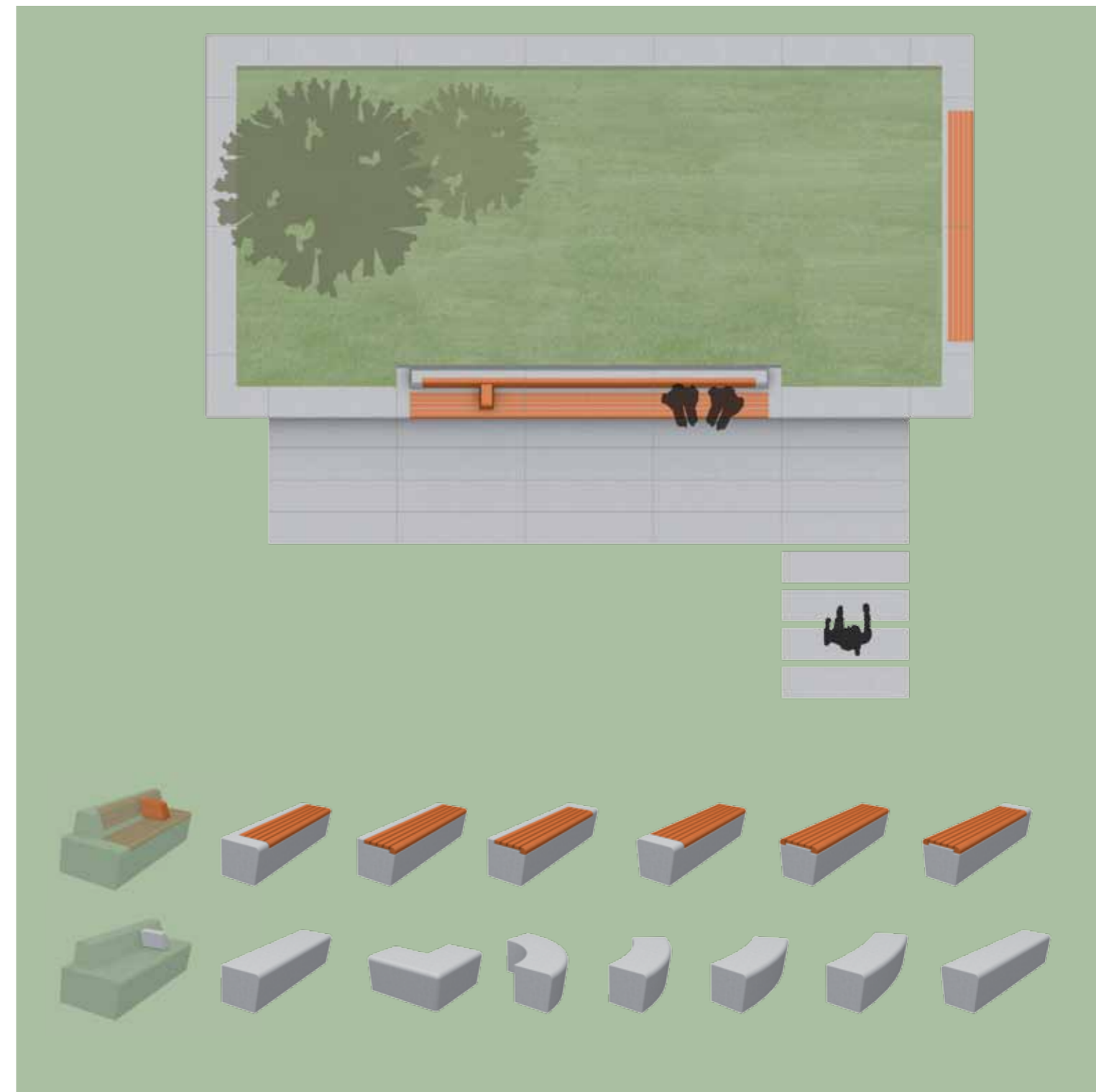
ELEMENTALE

| OVERALL DIMENSIONS | | | |
|--------------------|--------|--------|----------------|
| LENGTH | DEPTH | HEIGHT | SEATING HEIGHT |
| 2000 MM | 785 MM | 760 MM | 450 MM |

STANDARD COLOURS



The dimensions shown are just a small part of a very wide range of models. Please contact us for further information about our total range of dimensions.





STEPS

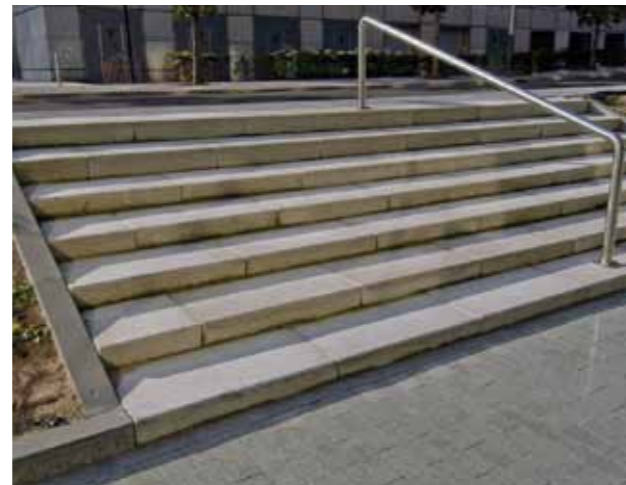
INTRODUCTION

When landscaping any public space, complementary elements such as steps are an important component to consider alongside kerb accessories and street furniture. Kellen concrete steps can provide that perfect parallel to the Kellen paving range to help create that perfect aesthetic in an affordable way for any contemporary landscaped area.

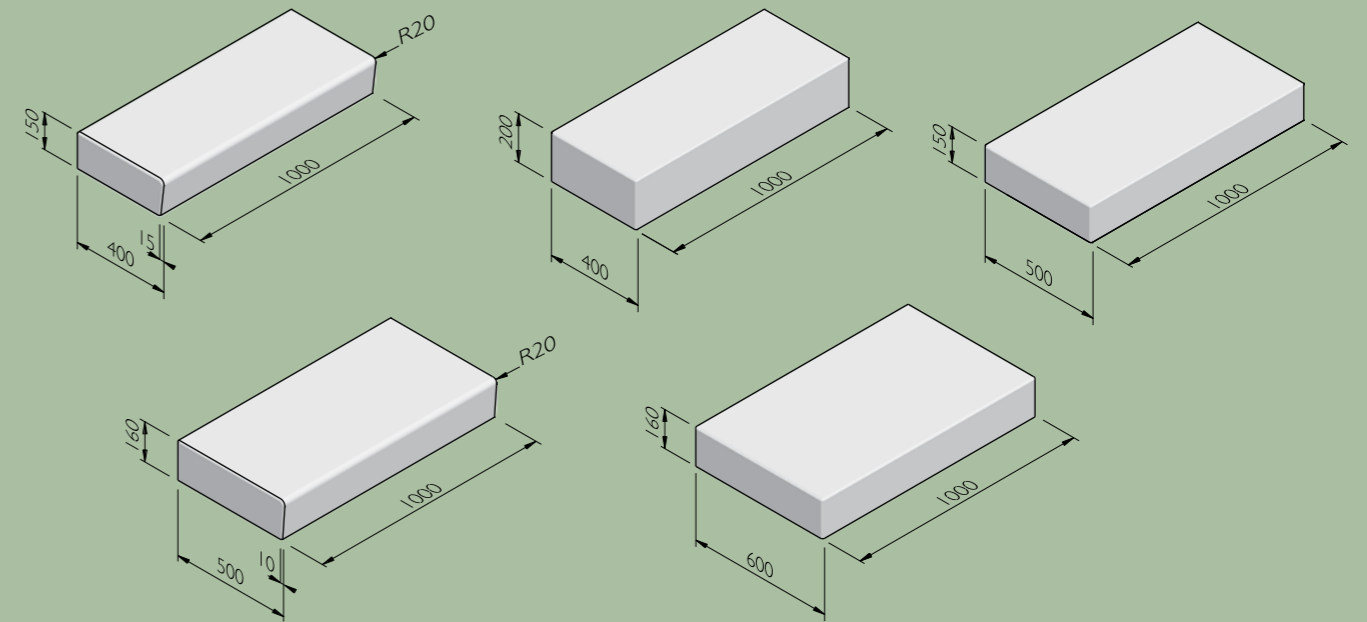
INSERTS

Why not combine a granite insert into the Kellen concrete step also? There are many colour combinations and the finished effect can be quite unique. Please discuss this option with your Hardscape representative when specifying these products.





DIMENSIONS



All above can be fitted with DDA (Disability Discrimination Act) compliant nosings and strips.

LAVARO COLOURS

| | | | | | |
|----------------|----------------|-----------------|----------------|-----------|---------------|
| | | | | | |
| WIT 701 | WIT 705 | GRIJS 712 | ZWART 705 | ZWART 701 | HAVANNA BRUIN |
| | | | | | |
| STANDARD GRIJS | STANDARD ZWART | ZVB LIGHT GRIJS | ZVB DARK GRIJS | ZVB ZWART | ZVB WIT |



HARDSCAPE SUPPLY A RANGE OF OTHER TYPES OF HARD LANDSCAPING MATERIALS AND STREET FURNITURE OPTIONS. PLEASE VISIT WWW.HARDSCAPE.CO.UK OR CALL 0845 260 1748 FOR FURTHER INFORMATION.



HARDSCAPE
Inspire : Select : Supply

Head Office

Ashworth House, Deakins Business Park,
Egerton, Bolton BL7 9RP
Tel: 0845 260 1748 Fax: 0845 260 1749
Email: enq@hardscape.co.uk

Southern Office

Unit 25, Long Marston Industrial Estate,
Long Marston, Stratford Upon Avon CV37 8QR
Tel: 0845 260 1748 Fax: 0845 260 1749
Email: enq@hardscape.co.uk

Northern Ireland Office

Building C, The Studios, 89 Hollywood Road,
Belfast BT4 3BD
Tel: 0845 260 1748 Fax: 0845 260 1749
Email: enq@hardscape.co.uk

www.hardscape.co.uk

