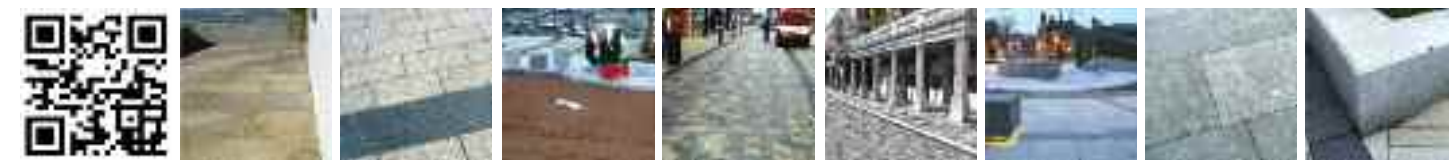




Materials used:
 Royal White,
 Pink Pearl and
 Darton granite
 setts and slabs.

Streets Ahead Project, Belfast

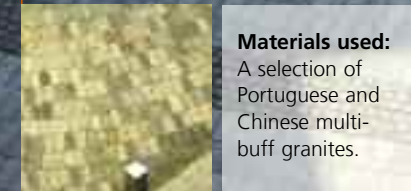


Head Office
 Ashworth House
 Deakins Business Park
 Egerton
 Bolton BL7 9RP
 T 0845 260 1748
 F 0845 260 1749
 E enq@hardscape.co.uk

Southern Office
 Unit 25
 Long Marston Industrial Estate
 Long Marston
 Stratford Upon Avon CV37 8QR
 T 0845 260 1748
 F 0845 260 1749
 E enq@hardscape.co.uk

Northern Ireland Office
 Building C
 The Studios
 89 Hollywood Road
 Belfast BT4 3BD
 T 0044 (0) 845 260 1748
 F 0044 (0) 845 260 1749
 www.hardscape.co.uk

Granite



Materials used:
 A selection of
 Portuguese and
 Chinese multi-
 buff granites.

Trinity Gardens, Newcastle

Granite
 A highly durable and always popular natural stone.
 Granite comes in a huge variety of colours and textures and is suitable for almost any kind of external application.

Geologically it is a coarse grained igneous rock containing a blend of accessory minerals that contribute to giving it a unique colour. Everything from black granite to white granite and every shade in between can be sourced.
 Hardscape are able to supply a large range of textures, colours, formats and blends of different types of this versatile stone to complement any scheme.



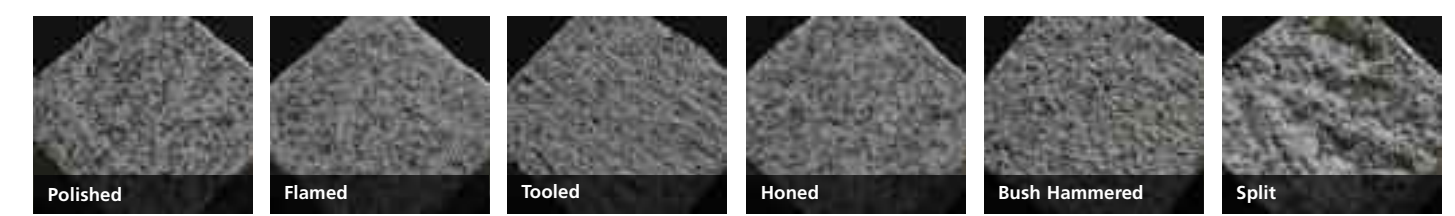
Materials used:
Magma granite flamed slabs and Kobra granite setts.

Hope University, Liverpool

DISCLAIMER: Due to variations in the printing process this colour swatch represents an approximate guide to Hardscape colour-types of granite within this selective range. Please request individual samples to appreciate and confirm colour selection.



Finishes



Granites depicted are for demonstration purposes only. Colours and types of granite may differ slightly when 'finishes' applied. Test data available upon request.

Specials



Types

Slabs

Slabs with a natural surface and sawn edges are often used for the paving and facing of both internal and external areas. They are the main paving item for squares, streets, pavements, arcades and shopping centres. Sizes: Standard and bespoke available on request.

Setts

They provide texture in the streetscape. Being an extremely versatile product, the sett is used either to contain or mark the edge of paved areas, squares, streets or to shape flower-beds, traffic islands and soft landscaping. They can also be used decoratively to embroider paved areas. Sizes: Standard and bespoke available on request.

Kerbs

Usually paved vertically, kerbstones can be used for shaping footpaths, flower-beds, stairs or for marking edges of traffic and pedestrian paved areas.